

# VOYAGE TO THE DEEP

## UNDERWATER ADVENTURES

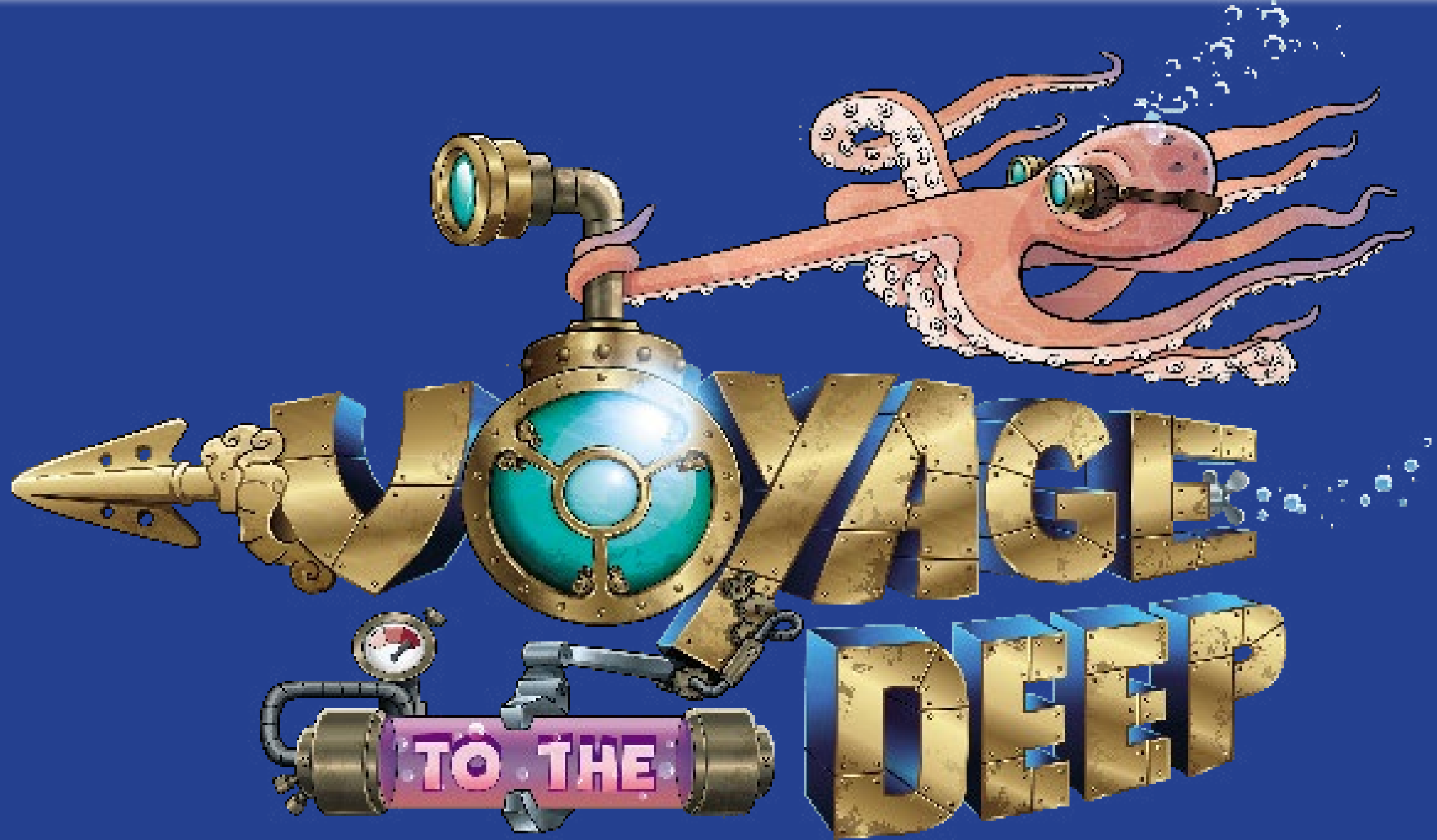
EXHIBITION PROSPECTUS

**MU  
SEA  
UM**

AUSTRALIAN NATIONAL  
MARITIME MUSEUM



**FLYING FISH**



UNDERWATER ADVENTURES



# RELEASE YOUR INNER AQUANAUT!

Based on French author Jules Verne's 1870 classic *20,000 Leagues Under the Seas*, the exhibition brings to life the adventures of Captain Nemo, his fantastical submarine the *Nautilus* and the mythical world he inhabited.

At the center of this fantasy world is the giant *Nautilus* where visitors can climb aboard and discover the inner workings of a deep-sea vessel.

They can take up the controls at the helm, look through the periscopes, crank the propeller, test out the bunks and explore 'Captain Nemo's Cabinet of Curiosities', full of incredible marine specimens.

Visitors can also discover the lost underwater world of Atlantis, visit the Octopus's Garden with its massive clamshell, or wander through the seaweed maze in the kelp forest.





# WHAT'S EXPLORED

This exhibition presents a variety of topics through interactives, graphics and props.

## TOPICS EXPLORED INCLUDE:

- Marine habitats and creatures
- Marine biology research techniques
- Periscopes
- How submarines are steered and powered
- How submarines dive and surface
- Diving equipment
- Maritime archaeology





# THE NAUTILUS

Verne's submarine was a marvel of imagination—fantastical, yet grounded in real-world technologies.

This exhibition brings together both the fiction and the facts, inviting visitors to dive into a visionary world while discovering the real science of ocean exploration. Visitors will step into the role of a submarine operator and experience the underwater realm as it might appear from inside a fictional deep-sea vessel.

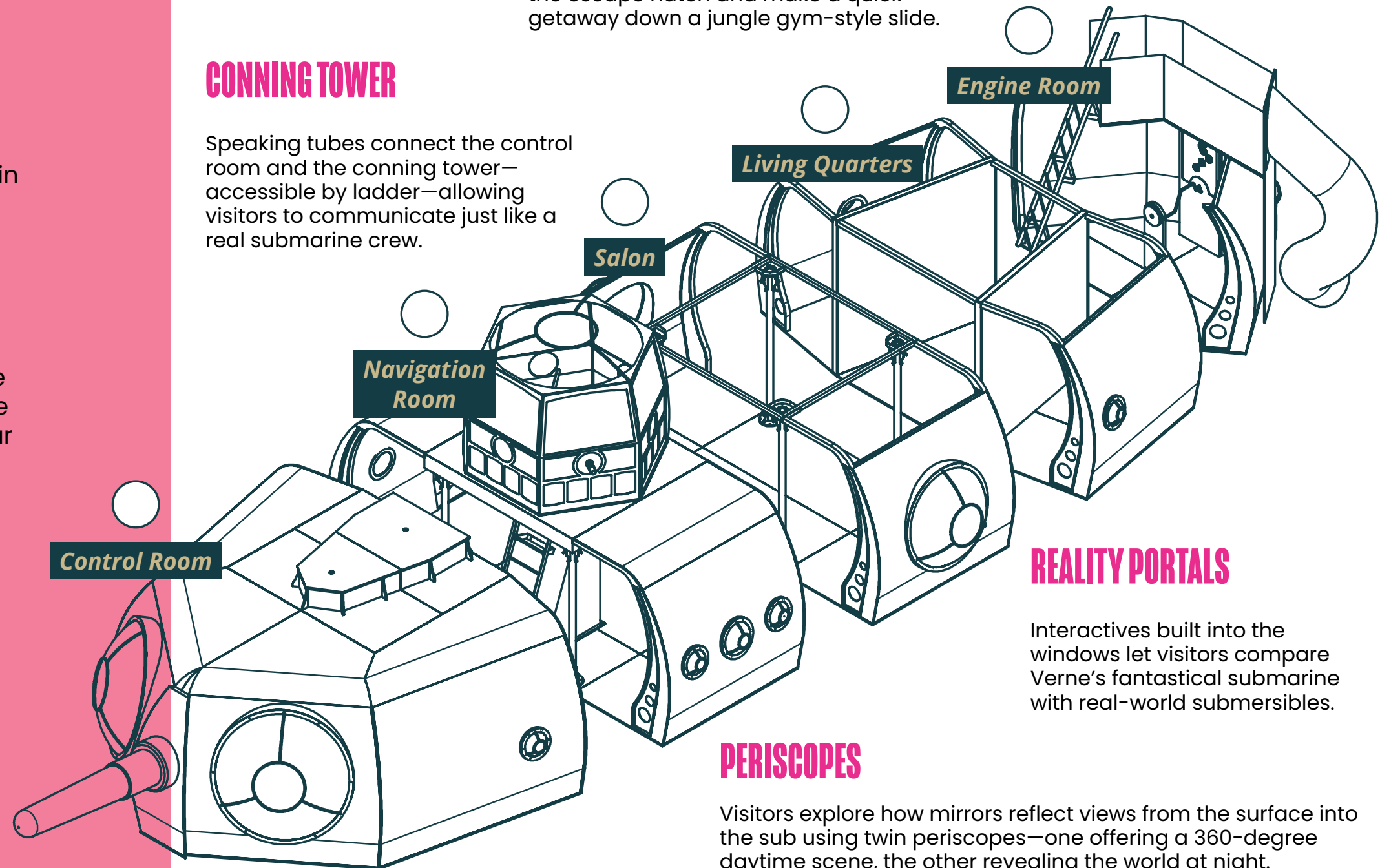
Designed for a wide range of immersive experiences, the exhibition features interactives, mechanical and electromechanical displays, dynamic projections, and touchscreen stations—offering something for every type of explorer.

## CONNING TOWER

Speaking tubes connect the control room and the conning tower—accessible by ladder—allowing visitors to communicate just like a real submarine crew.

## ESCAPE HATCH & SLIDE

The sub is under attack! Climb through the escape hatch and make a quick getaway down a jungle gym-style slide.



## REALITY PORTALS

Interactives built into the windows let visitors compare Verne's fantastical submarine with real-world submersibles.

## PERISCOPES

Visitors explore how mirrors reflect views from the surface into the sub using twin periscopes—one offering a 360-degree daytime scene, the other revealing the world at night.





# THE NAUTILUS

## NAVIGATION ROOM

- Navigational Tilt Ball Maze
- Weighted Boots Interactive
- Conning Tower

## SALON

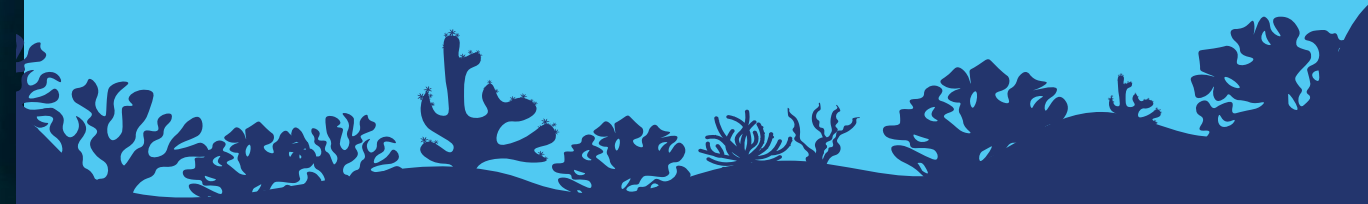
- Magnifier Interactive
- Projector Screen and Iris
- Mechanical Grabbers
- Bookcase of Curiosities
- Nemo's Pipe Organ

## LIVING QUARTERS

- Shark Interactive
- Galley
- Ballast Tank Interactive
- Locker Interactive
- Three-Tiered Bunk Beds
- Bathroom Stall

## ENGINE ROOM

- Connect the Batteries
- Slide, Ladder and Mats
- Escape Hatch





# SAMPLE FLOORPLAN

## KELP FOREST:

Explore a forest of giant kelp, and find the creatures living there.

## ATLANTIS:

The sunken city can be used as a performance stage.

## MOSAIC PROJECTION:

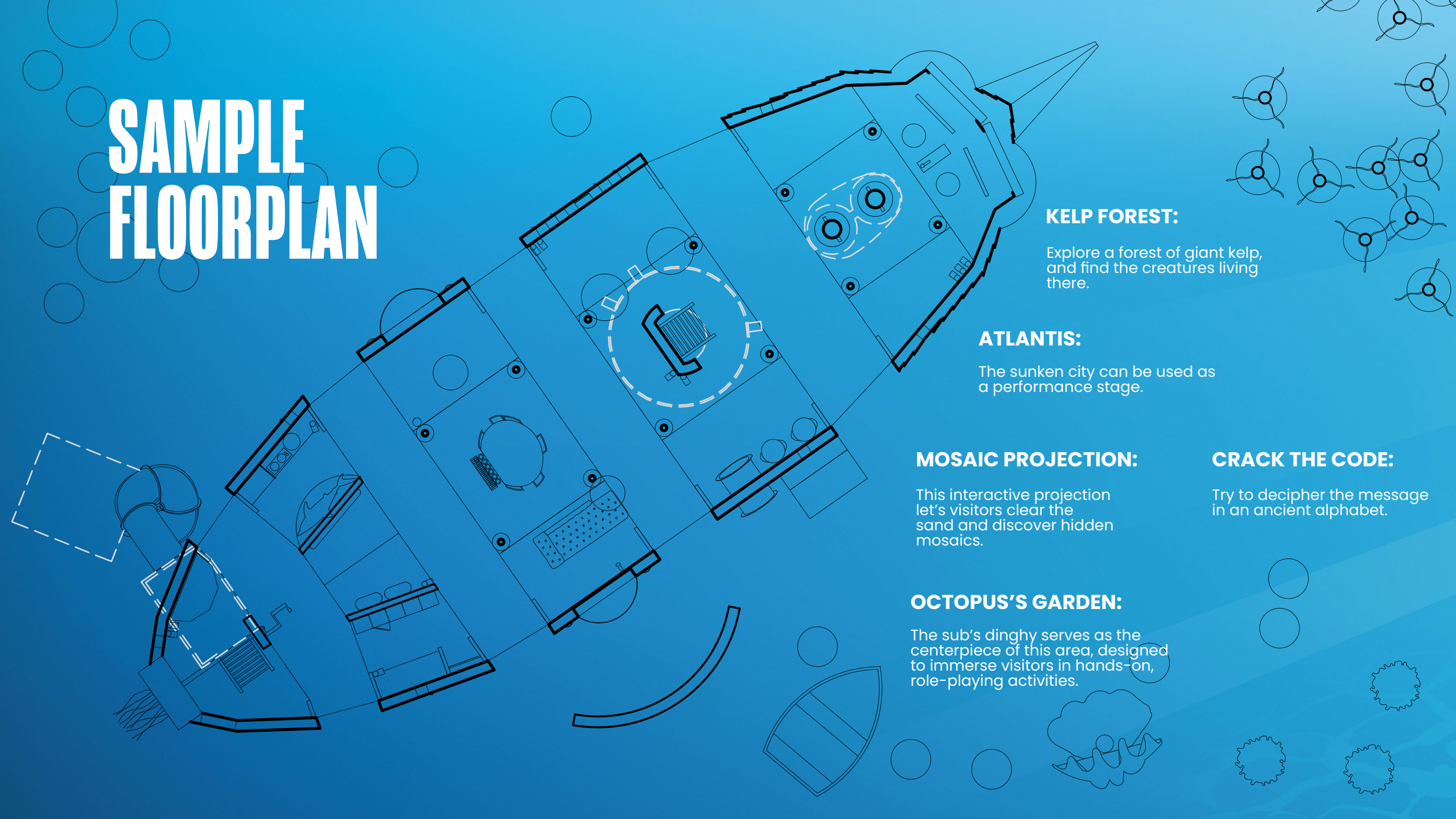
This interactive projection let's visitors clear the sand and discover hidden mosaics.

## CRACK THE CODE:

Try to decipher the message in an ancient alphabet.

## OCTOPUS'S GARDEN:

The sub's dinghy serves as the centerpiece of this area, designed to immerse visitors in hands-on, role-playing activities.





# EXPANDED CONTENT

Adult visitors can explore deeper content through a trail booklet filled with fascinating insights into the exhibition's themes. It's a great way to spark conversations with younger visitors—either during their visit or afterward to extend the experience beyond the gallery.

*Voyage to the Deep - Underwater Adventures* aligns closely with school curriculum objectives, offering strong connections to science through both the built environment (engineering, design, and mechanics of the submarine) and the natural environment (life cycles, ecosystems, and ocean habitats).

This turnkey exhibition delivers a wide range of experiences—from full-body interactives to tabletop activities and informative text panels. With no fixed path, visitors are free to explore at their own pace, following their curiosity based on age, interest, and learning style.





MU  
SEA  
UM

AUSTRALIAN NATIONAL  
MARITIME MUSEUM

The Australian National Maritime Museum is Australia's national centre for maritime collections, exhibitions, research and archaeology.

The museum presents a changing program of stimulating exhibitions and events to share Australia's maritime history and connect the stories, objects, people and places that are part of our country's narrative. We welcome over 850,000 visitors annually including families, interstate and international tourists.

Connecting with audiences outside of Sydney, interstate and across regional Australia is a big part of what we do. Our diverse touring exhibitions give regional communities the chance to view and learn more about the fascinating stories behind the National Maritime Collection.

[sea.museum](http://sea.museum)



FLYING FISH

At Flying Fish, we believe exhibitions can do more. As a leading producer of touring exhibitions for more than a decade, we partner with world-class museums and science centers to create extraordinary, high-impact experiences. Our exhibitions have welcomed over 12 million visitors worldwide, exploring science, history, culture, and beyond. We're committed to making exceptional, authentic content accessible to communities everywhere, while generating sustainable revenue for our partners. Whether creating something new or adapting existing content for international tour, Flying Fish isn't just a service provider—we are a creative partner and industry ally, committed to expanding our clients' reach and impact.

For Museums. By Museums.

[flyingfishexhibits.com](http://flyingfishexhibits.com)



*Voyage to the Deep – Underwater Adventures* is a traveling exhibition produced by the Australian National Maritime Museum and toured internationally by Flying Fish.



# SPECS

**Size:**

4,000–6,000 sq. ft. / 380 – 560 m²

**Ceiling Height:**

12 ft. / 4 m.

14 ft. / 4.3 m. for the optional conning tower

**Production:**

Seven (7) working days for installation

Five (5) for deinstallation

**Languages:**

American English & Spanish

**Freight:**

Two (2) 53 ft. by land

Three (3) 40 ft. containers by sea

# CONTACT

+1.651.207.8877

[flyingfishexhibits.com](http://flyingfishexhibits.com)

[info@flyingfishexhibits.com](mailto:info@flyingfishexhibits.com)

