

A photograph of the MUSE Science Museum in Trento, Italy, at dusk. The building features a prominent, angular glass facade that reflects the twilight sky. The interior lights are visible through the glass, creating a warm glow. The sky is a deep blue, and the overall atmosphere is modern and architectural.

# Sustainability @ MUSE

David Tombolato, Curator  
MUSE – Science Museum – Trento, Italy

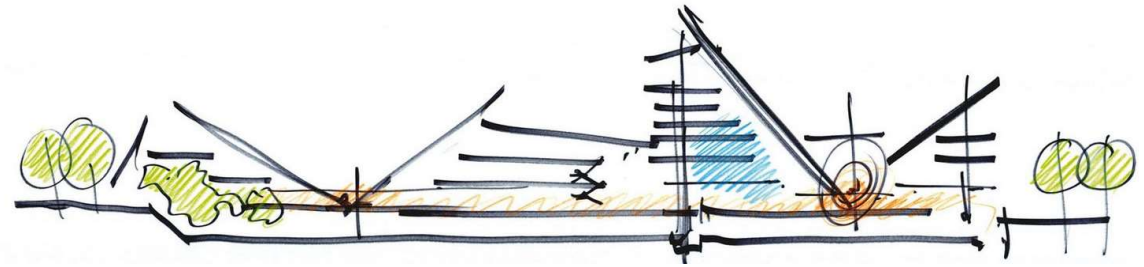
The MUSE logo, featuring the word "MUSE" in a stylized, purple, sans-serif font with a slight shadow effect.



MUSE has reoriented its mission through the compass of Agenda 2030

- Educational activities
- Research and UE projects
- Exhibitions
- Events
- Participation at National and Regional Sustainability strategy

## The three directions



Policy

Dissemination and  
education

Sustainability  
in practice

# POLICY



- Regional sustainable strategy
- Trentino Climate Strategy
- Partnership ASviS - Alleanza Italiana per lo Sviluppo Sostenibile
- Museintegrati
- Life program
- A. Langer Symposis

# DISSEMINATION AND EDUCATION



- Sustainability exhibition
- Educational activities for school
- Green event for family
- Evening events for youth
- Conferences
- Podcast

# SUSTAINABILITY IN PRACTICE



- **Infrastructural level**

Leed GOLD Building

- **Management level**

Muse Cafè with Ecoristoration Label;  
eco-products at Muse bookshop; water  
management for visitors

- **Research level**

Biodiversity conservation  
Glacier monitoring



- **Social Level**

Inclusion programs

Social certification

- **Corporate Level**

Ethical and sustainable issues on  
public-private agreements and activities

- **Green Public Procurements**

Design for Disassembly

Reusable products

# SUSTAINABILITY IN PRACTICE



- **Infrastructural level**

Leed GOLD Building

- **Management level**

Muse Cafè with Ecoristoration Label;  
eco-products at Muse bookshop; water  
management for visitors

- **Research level**

Biodiversity conservation  
Glacier monitoring



- **Social Level**

Inclusion programs

Social certification

- **Corporate Level**

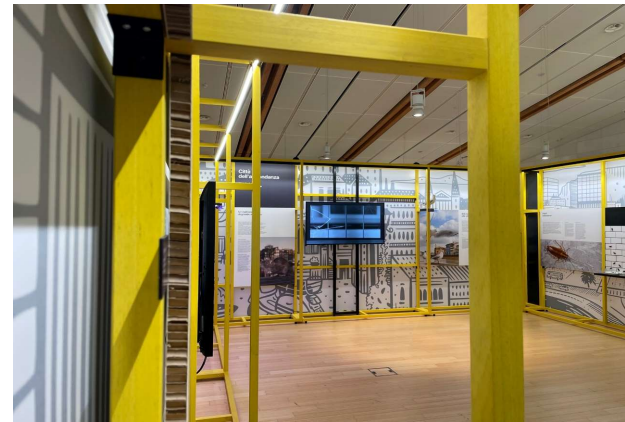
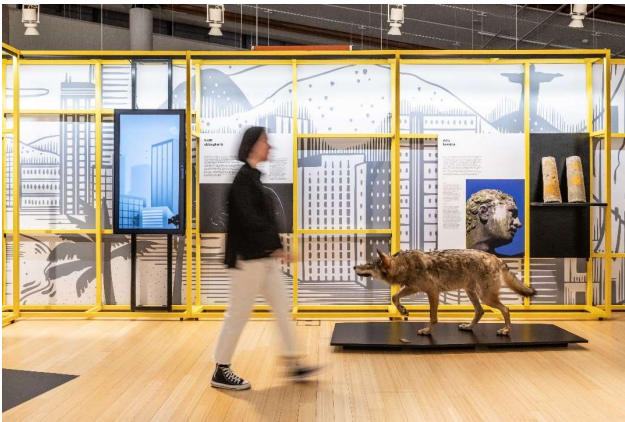
Ethical and sustainable issues on  
public-private agreements and activities

- **Green Public Procurements**

Design for Disassembly

Reusable products

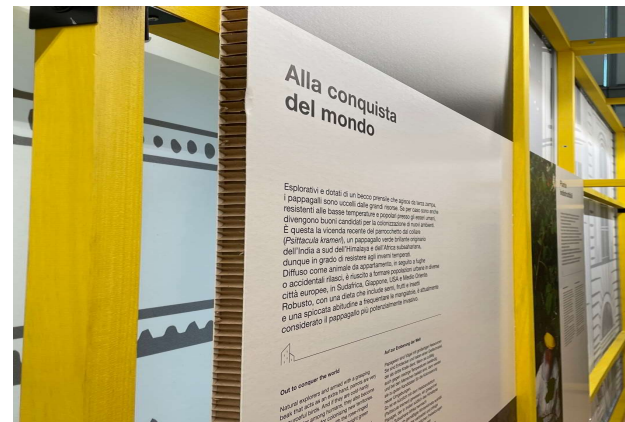
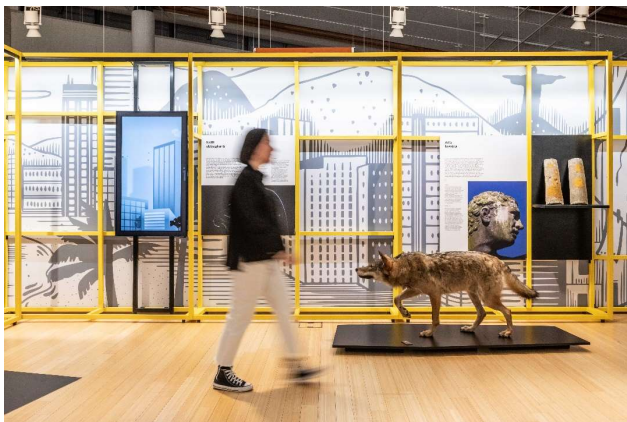
# GPP - Design for Disassembly



## **Disassembly structure**

With structural elements of resistant wood enabling repair, upgrading, and recycling, extending their service life or allowing reuse.

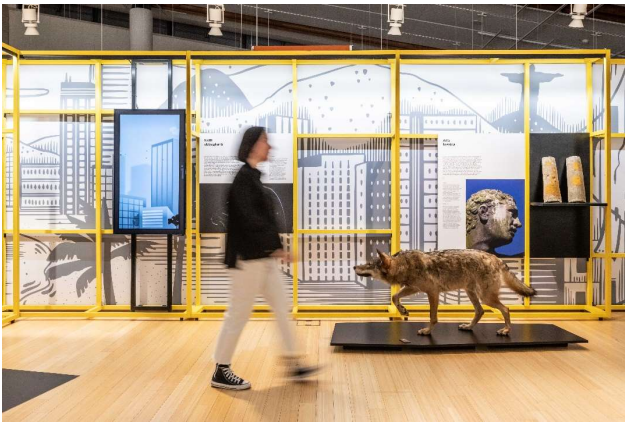
# GPP - Design for Disassembly



**Re-board honeycomb cardboard panels**  
With sustainability label as FSC, PEFC or Ecolabel  
Good choice for a short time exposition



# GPP - Reusable product



## Reusable products

Materials that can be reused in travelling exhibition according to the space available (here, modular drapes).

# GPP – What regulations and law?



## **Minimum environmental criteria**

Italian Environmental Ministry: National Action Plan on Green Public Procurement and in Trentino with the provincial law n. 2/2016.

Environmental and ecological requirements to identify products and services more sustainable.

Environmental criteria are defined as "minimum" being basic elements of qualification of environmental initiatives.

# GPP – Weight of environmental criteria in tender



- Economical offer: up to 40/100
- Technical offer: up to 45/100
- Environmental criteria: up to 15/100

# GPP – Weight of environmental criteria in tender



- Economical offer: up to 40/100
- Technical offer: up to 45/100
- Environmental criteria: up to 15/100
- **the minimum environmental criteria has to be present otherwise the company who apply loses automatically the tender**

## GPP - Selection of suppliers



KLIMANEUTRAL 

Not only "the lowest price," but also "**the most economically advantageous bid**" taking into account environmental criteria.

For example: we chose a company who sold us a product (catalog) at higher price but giving us the chance to compensate emissions.



GPP – what choice is better?



MUSE



# THANK YOU

DAVID TOMBOLATO - MUSE

E-MAIL

[david.tombolato@muse.it](mailto:david.tombolato@muse.it)

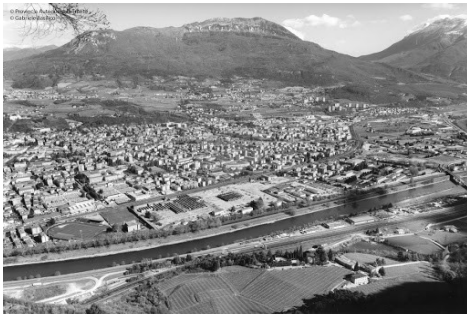
WEB SITE

[www.muse.it](http://www.muse.it)

**SLIDE  
AGGIUNTIVE**



# AN URBAN REGENERATION STORY



## MICHELIN AREA

1999  
Michelin Area, a  
brownfield factory



## REGENERATION

2006-2013  
Ex industrial area,  
reclaimed and  
redeveloped



## LE ALBERE AND MUSE

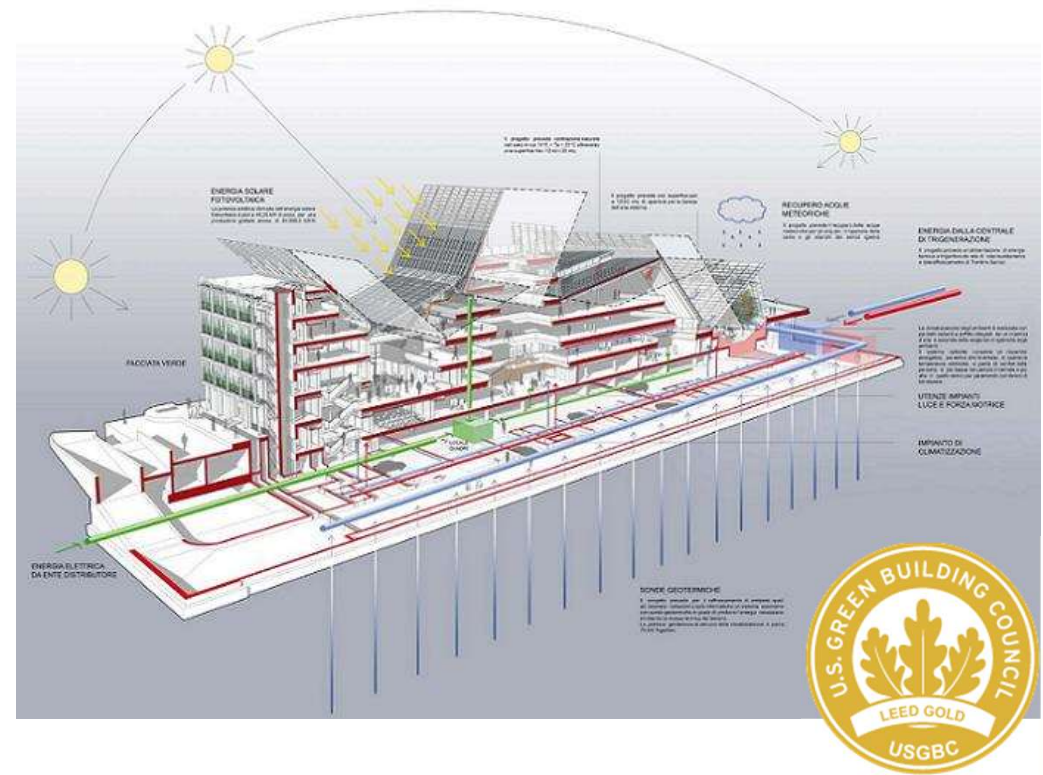
27 July 2013  
The opening

MUSE

# A LEED BUILDING

## Best practices

- Photovoltaic panels and geothermal probes
- Power supply by trigeneration system
- Water management system (recycling of rainwater, used for sanitation, greenhouse and aquariums)





# SOCIAL SUSTAINABILITY

Museum promotes inclusion and participation through activities turned to fragile categories.

# SOCIAL CERTIFICATION

Child-friendly museum:

- A children's menu;
- Parking spaces reserved for mothers and fathers;
- Collaborations with schools and other educational institutions;
- Setting up of Baby pit stops (area for breastfeeding and baby care).

Improve the reconciliation between family and employees' work.

