

LA RUE DES  
STRAËG-IMM

**cité**

sciences  
et industrie

**Palais**  
DÉCOUVERTE

PARIS FRANCE

# opposites opposites

traveling exhibition



「 Welcome  
to the world  
of opposites! 」



Tall/small, high/low, light or dark... Through contrasting perceptions, the child develops reference points and boundaries, within which he or she will gradually be able to introduce a range of sensations, emotions and ideas that are increasingly refined and nuanced. Opposites and nuances, which are essential notions for the development of young children, their understanding of the world and their ability to find their place in it, enable them to use their senses and their critical mind.

Unusual and poetic, the exhibition immerses visitors aged 2 to 7 and their accompanying adults in an imaginary world of contrasting visual, sound, and tactile perceptions. In this unusual village, the familiar childhood places - home, school, park, shop, street - are reinvented in a sensory, visual, and joyful way.

---

*Opposites* is the second exhibition of the editorial line “Young and curious/ Elementary science for children”, a series of exhibitions dedicated to children from 2 years old.

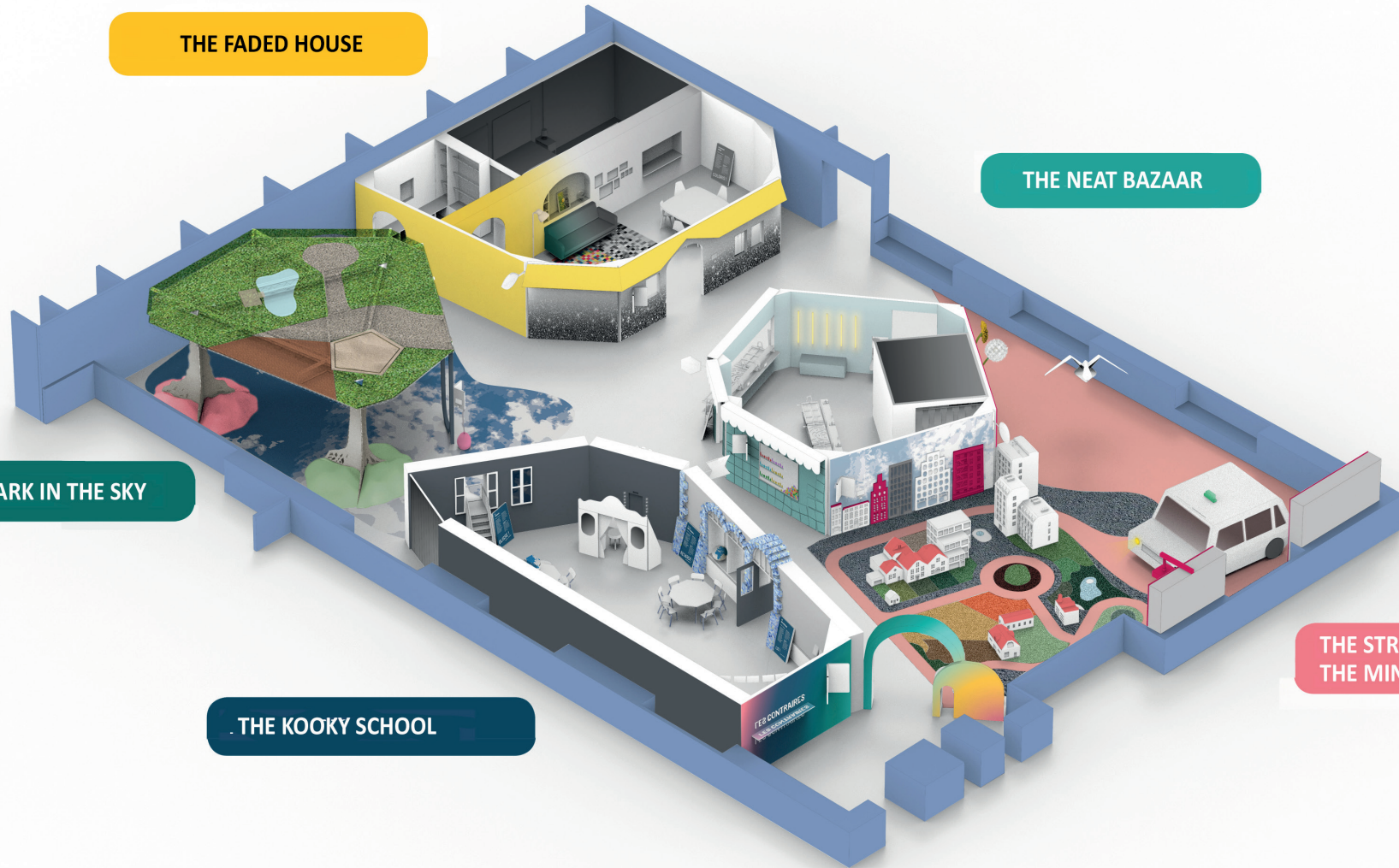
THE FADED HOUSE

THE NEAT BAZAAR

THE PARK IN THE SKY

THE KOOKY SCHOOL

THE STREET OF THE MINI GIANTS





This exhibition offers us an opportunity to experience the wonders of the world. It seeks to surprise children, to make them laugh, to stimulate their imagination around words and language.

## the kooky school

Well, at first glance, everything resembles an ordinary classroom. Yet this space is teeming with a multitude of “flawed” details that do not quite seem to add up, funny objects that are full of contradictions! Unbalanced chairs or a twisted ruler have found their way into the middle of the furniture...

opposites pairs • hard/soft • prickly/smooth • round/square • in/out • balanced/unbalanced • blurry/net • straight/twisted

## the street of the mini-giants

This street is unlike any other, giving the impression of variations in physical size: height, weight, volume and completely turns the scales upside down: some urban elements are oversized (5 times bigger), others shrunk (10 times smaller) to make you feel in turn like a giant or a Lilliputian.

opposites pairs • big/small • heavy/light • low/high • slow/fast • piano/forte

### HIGHLIGHTS

- 🕒 Discover objects that love playing pranks in the kooky school.
- 🕒 Play with scales in the street of the mini-giants.
- 🕒 Organising and classifying, disordering, separating objects in the neat bazaar.
- 🕒 Hiding in the invisibility room of the faded house.
- 🕒 Cross the park in the sky by walking upside down.



## the neat bazaar

In this store, the objects are in turn ordered, tidy... or completely disordered. The children are busy playing a big classification, sorting, and grouping game, thinking about the common and distinctive features of these strange goods. They build and deconstruct sets. These collective activities encourage the sharing of experiences between young and old. An animated film gives them an opportunity to extend their reflection and address questions related to identity and stereotypes.

opposites pairs • tidy/untidy • same/different

## the faded house

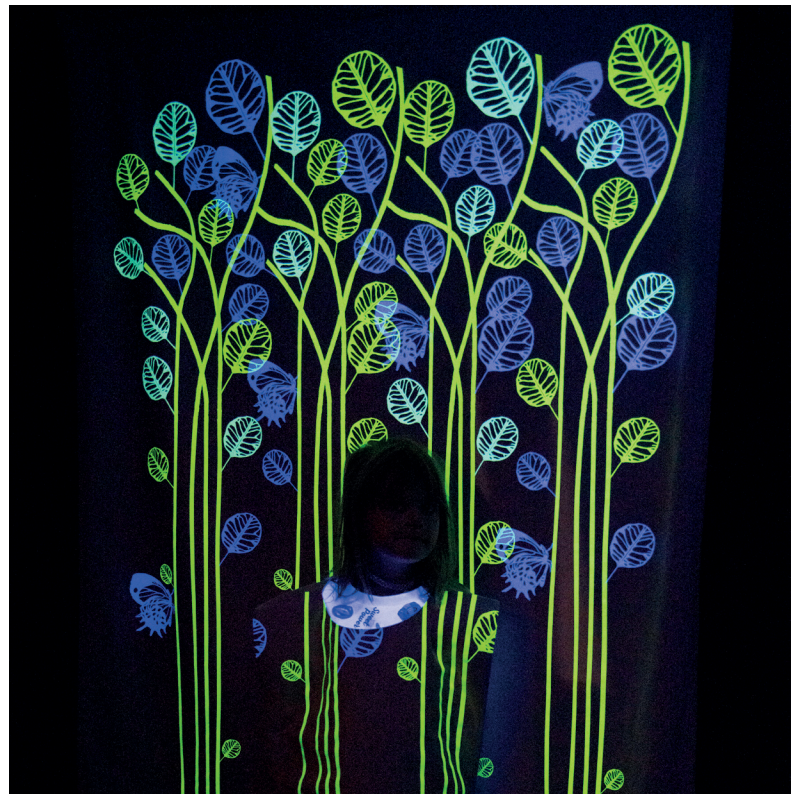
The discoloured house invites the young visitors to discover the contrasts of light and colour. In the living room, the furniture, the walls, or the windows are areas of exploration to make the contrasts between dark and light or between darkness and brightness their own. The experience continues in the invisibility room, where children play camouflage games to test what is visible and what is invisible.

opposites pairs • black/white • dark/light • coloured/faded • dark/bright • visible/invisible

## the park in the sky

Here visitors discover a square "upside down". The sky and the treetops unfold on the ground while the children's playground, the pond and the sandbox are on the ceiling. A soundtrack reinforces the immersion in the atmosphere of the park. The audience sits comfortably in the treetopsto observe the scenery upside down. The pond becomes the projection surface for an animation film.

opposites pairs • upside/down • up/down • on the ground/in the air



## DOOG TO KNOW

**Audience:** children from 2 to 7

**Surface Area:** 500/600 sq.m

**Composition:** 17 interactive exhibits

**Languages:** French, English and Spanish

*Can be adapted in other languages*

Universal accessibility

---

### contacts

**Universcience**

**Export Department**

30, avenue Corentin-Cariou  
75019 Paris (France)

Mail : [contactpro@universcience.fr](mailto:contactpro@universcience.fr)

Tel : + 33 (0) 1 40 05 73 53

**BROWSE OUR CATALOGUE**

[www.universcience.fr/exhibitionservices/](http://www.universcience.fr/exhibitionservices/)