



TRAVELLING EXHIBITION

# ON THE TRAIL OF GREAT APES

---

AN ENVIRONMENTALLY COMMITTED EXHIBITION  
TAKING US TO MEET THE GREAT APES  
IN THE HEART OF THE TROPICAL FOREST.

---





# FIRST PART

## WHO ARE THE GREAT APES?





Visitors meet the exhibition's key protagonists. Chimpanzees, gorillas and orangutans are our nearest cousins. This relationship makes them special animals that evoke our fascination and curiosity.





## SECOND PART

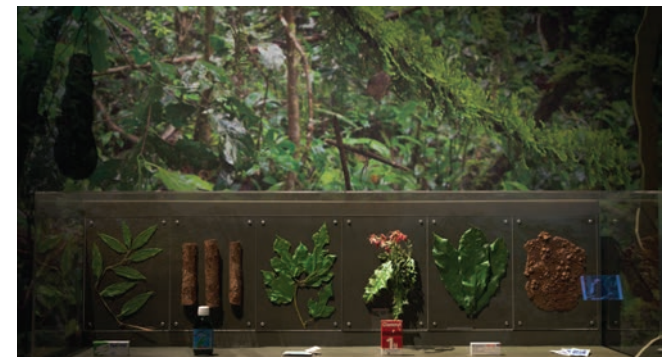
### A GREAT APE'S LIFE IN THE FOREST






---

This section immerses us in the great apes' environment: the tropical forest. Practicing cultural behaviours, these primates are capable of making and using tools. They build nests to sleep in every evening and communicate using an impressive repertoire of sounds and gestures!





## THIRD PART

### WHAT DOES THE FUTURE HOLD FOR GREAT APES?







Destruction of their habitat, hunting, trafficking, illnesses . . . The visitor is alerted to the grave threats facing great apes. Today all these species are endangered. The exhibition proposes examples of actions that can be taken to preserve them.



# HOW YOU CAN HOST THE EXHIBITION ?

## I. HOST A CUSTOMIZED ADAPTATION





## THE CUSTOMIZED ADAPTATION

This is a scenographic or graphic adaptation of the original exhibition consisting of:

- The grant of use for the museographic and scientific concept
- Content in the form of digital files (museographic programme, texts in French and English, audiovisual and multimedia resources)
- Additional objects and devices to be handled
- Museographic assistance for project adaptation
- Mediation tools for the exhibition: educational materials and files
- Scientific and cultural programming resources around the exhibition



# HOW YOU CAN HOST THE EXHIBITION ?

## 2. HOST THE LIGHT VERSION







## THE LIGHT VERSION

The Light Version is a synthesis of the original exhibition in the form of 15 graphic panels. It allows you to present a high-quality support for mediation on an original theme. It includes:

- Graphic panels in the form of digital files, ready for printing
- Mediation tools for the exhibition: educational materials and files
- Audiovisuals and multimedia for projection on your screens (optional)
- Loans from MNHN collections, museum objects and interactive devices (optional)



## TRAVELLING EXHIBITION

### FURTHER INFORMATION...

[www.mnhn.fr/en/travelling-exhibitions](http://www.mnhn.fr/en/travelling-exhibitions)

### CONTACT

MUSÉUM NATIONAL D'HISTOIRE NATURELLE  
Programming and Travelling Exhibitions  
Public Division  
57, rue Cuvier, 75005 Paris  
FRANCE

[itinerances@mnhn.fr](mailto:itinerances@mnhn.fr)

