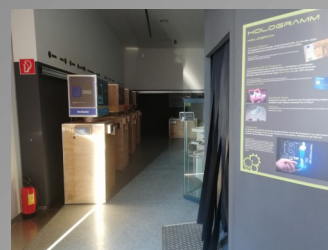
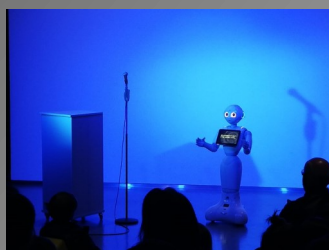


Da schau her ein Roboter!

EXPEDITION INS DIGI-TAL



TRAVELING EXHIBITION



Hands on museum

wissens.wert.welt

blue cube & kidsmobil

wissens.wert.welt
blue cube & kidsmobil



Da schau her ein Roboter!

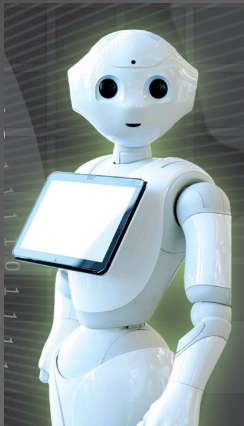
EXPEDITION INS DIGI-TAL



SHORT DESCRIPTION

👍 EXPEDITION INTO THE DIGIT-TAL is a cross-generational interactive exhibition. With this hands-on exhibition we managed to break down barriers to the digital world. The target audience are children from 5 years of age, as well as families, educators, school classes or seniors.

👍 We span an arc from antiquity to the present day and show that generations of people have existed before us who prepared the digital world for us with their inventions.



👍 Without the abacus, the slide rules and the discovery of electricity, there would be no computers, no robots and no smartphones.

👍 The central concern of this interactive exhibition is to awaken or deepen interests in the technical world and encouraging technical training. The humanoid robot DIGI is part of our team and welcomes the visitors to the wissens.wert.welt. Thus, fears of IT contact are reduced from the very beginning.

👍 A visit to the exhibition stimulates reflective handling of new technologies and helps visitors participate more competently and actively in our rapid era of digital development.

Da schau her ein Roboter!

EXPEDITION INS DIGI-TAL



CONTENT

Our finished package includes:

- 👍 an ultra-modern and innovative exhibition
- 👍 flexible hands-on stations
- 👍 mobile exhibition elements, boards & exhibits
- 👍 Advertising graphics and layouts in PDF & Adobe InDesign
- 👍 Instructions & exhibition texts in German and English language
- 👍 creative educational programme for children, families, schools and educational establishments
- 👍 all communication materials in German and English language
- 👍 Exhibition-related workshops
- 👍 personnel training & support
- 👍 support in the room planning and the exhibition setup
- 👍 contract preparation

Da schau her ein Roboter!

EXPEDITION INS DIGI-TAL



CHARACTERISTICS

- 👍 Target group: children from 5 years, families, senior citizens, educational establishments
- 👍 Area requirement: approx. 120m²
- 👍 15 hands-on / participation stations
- 👍 Duration of a visit: approx. 1,5 hours
- 👍 Idea : Team wissens.wert.welt
- 👍 Cooperation partners:
ABZ Flex Althofen, FH - Carinthia, HTL Mössinger Street
Klagenfurt, Bfi Carinthia & Styria, Institute for Robotics Lake
Side Park, Joanneum Research, Technical Museum Vienna, IV
Carinthia
- 👍 Available from 1st of October 2020

Da schau her ein Roboter!

EXPEDITION INS DIGI-TAL



Hands-on stations

1. A robot called DIGI
2. Historical development
3. Morse code
4. Binary code
5. Puzzle morse code & Binary code
6. Programming with the Cubettos
7. Quiz - Save Internet
8. Augmented Reality (AR)
9. Algorithm
10. Pegboard (assign terms)
11. Programming with Crumble
12. Robots in the industry (Flex)
13. The difference between human and robot
14. Artificial intelligence (AI) in the nursery
15. Hologram

Da schau her ein Roboter!

EXPEDITION INS DIGI-TAL



CONTACT

👍 Address

wissens.wert.welt

blue cube & kidsmobil
Primoschgasse 3
9020 Klagenfurt am Wörthersee
Austria

👍 Management

Mag. ^a Sieglinde Sumper
E-Mail: sieglinde.sumper@wissenswertwelt.at
Phone: +43 664 620 27 20

👍 Office

Victoria Benedikt
E-Mail: office@wissenswertwelt.at
Phone: +43 664 620 20 44
Webpage: www.wissenswertwelt.at